



Government of India  
Ministry of Earth Sciences



India Meteorological Department

## PRESS RELEASE-2

Time of issue: 1630 hours IST

Dated: 16<sup>th</sup> November, 2023

### Sub: Deep Depression over westcentral Bay of Bengal

Yesterday's depression over westcentral Bay of Bengal moved nearly northwards till the midnight (2330 hours IST) of 15<sup>th</sup> November and thereafter gradually recurved north-northeastwards and intensified into a deep depression in the morning (0530 hours IST) of 16<sup>th</sup> November. Continuing to move further north-northeastwards, it lay centered at 1130 hours IST of today, the 16<sup>th</sup> November over Westcentral Bay of Bengal near latitude 17.9°N and longitude 87.3°E, about 420 km east of Visakhapatnam (Andhra Pradesh), 270 km south-southeast of Paradip (Odisha), 410 km south of Digha (West Bengal) and 540 km south-southwest of Khepupara (Bangladesh).

It is likely to continue to move north-northeastwards, intensify further into a cyclonic storm during next 24 hours and cross Bangladesh coast between Mongla and Khepupara with wind speed of 60-70 kmph gusting to 80 kmph by the early hours of 18<sup>th</sup> November, 2023.

Forecast track and intensity are given below:

Date/Time (IST)	Position (Lat. °N/ long. °E)	Maximum sustained surface wind speed (Kmph)	Category of cyclonic disturbance
16.11.23/1130	17.9/87.3	50-60 kmph gusting to 70 kmph	Deep Depression
16.11.23/1730	18.6/87.7	55-65 kmph gusting to 75 kmph	Deep Depression
16.11.23/2330	19.2/88.0	60-70 kmph gusting to 80 kmph	Cyclonic Storm
17.11.23/0530	19.8/88.3	70-80 kmph gusting to 90 kmph	Cyclonic Storm
17.11.23/1130	20.5/88.7	70-80 kmph gusting to 90 kmph	Cyclonic Storm
17.11.23/2330	21.6/89.5	60-70 kmph gusting to 80 kmph	Cyclonic Storm
18.11.23/1130	23.3/90.3	55-65 kmph gusting to 75 kmph	Deep Depression
18.11.23/2330	24.5/90.6	40-50 kmph gusting to 60 kmph	Depression

### Warnings:

#### (i) Rainfall Warning (graphics enclosed):

- Light to moderate rainfall at many places with isolated heavy rainfall is likely over coastal districts of West Bengal on 16<sup>th</sup> & 17<sup>th</sup> and over coastal districts of north Odisha on 16<sup>th</sup> November.
- Light to moderate rainfall at most places with isolated heavy rainfall is likely over Nagaland, Manipur, Mizoram & Tripura during 16<sup>th</sup> to 18<sup>th</sup> November with very heavy rainfall at isolated places over Mizoram & Tripura on 17<sup>th</sup> November.
- Light to moderate rainfall at many places with isolated heavy rainfall is likely over south Assam and east Meghalaya on 17<sup>th</sup> & 18<sup>th</sup> November.

#### (ii) Wind warning (graphics enclosed):

- **Squally weather** with wind speed reaching **35-45 kmph gusting to 55 kmph** is likely to prevail over southwest Bay of Bengal along & off Tamil Nadu & Puducherry and Sri Lanka coasts on 16<sup>th</sup> November.
- **Squally wind** speed reaching **50-60 kmph gusting to 70 kmph** is prevailing over Westcentral & adjoining Northwest Bay of Bengal and is likely to increase gradually becoming **60-70 kmph gusting**

Contact: Cyclone Warning Division, Office of the Director General of Meteorology,  
India Meteorological Department, Ministry of Earth Sciences.

Phone:(91) 11-24652484, FAX: (91) 11-24643128, 24623220, E-mail:cwdhq2008@gmail.com, Website: [rsmcnewdelhi.imd.gov.in](http://rsmcnewdelhi.imd.gov.in)

Spatial rainfall distribution: Isolated: <25%, A few: 26-50%, Many: 51-75%, Most: 76-100%

Rainfall amount (mm): Heavy rain: 64.5 – 115.5, Very heavy rain: 115.6 – 204.4, Extremely heavy rain: 204.5 or more.

to **80 kmph** over North Bay of Bengal from 16<sup>th</sup> midnight. It would increase further becoming **70-80 kmph gusting to 90 kmph** over North Bay of Bengal and decrease over westcentral Bay of Bengal becoming **40-50 kmph gusting to 60 kmph** on 17<sup>th</sup> morning. Thereafter, it would decrease becoming **55-65 kmph gusting to 75 kmph** over the North Bay of Bengal from 18<sup>th</sup> morning. **Squally wind** speed reaching **40-50 kmph gusting to 60 kmph** is likely over adjoining central Bay of Bengal from 17<sup>th</sup> evening to 18<sup>th</sup> morning and decrease thereafter.

- **Along & off Andhra Pradesh Coast: Squally wind speed reaching 30-40 kmph gusting to 50 kmph** is likely along & off south Andhra Pradesh coast on 16<sup>th</sup> November and **40-50 kmph gusting to 60 kmph** along & off north Andhra Pradesh coast during 16<sup>th</sup> to 17<sup>th</sup> morning. It would decrease thereafter.
- **Along & off Odisha Coast: Squally wind speed reaching 45-55 kmph gusting to 65 kmph** is prevailing and likely to increase gradually becoming **50-60 kmph gusting to 70 kmph** from 16<sup>th</sup> evening till 17<sup>th</sup> evening and decrease thereafter.
- **Along & off West Bengal Coast: Squally wind speed reaching 40-50 kmph gusting to 60 kmph** is prevailing. It is likely to increase gradually becoming **55-65 kmph gusting to 75 kmph** from 17<sup>th</sup> morning till 18<sup>th</sup> morning and decrease thereafter.
- **Along & off Bangladesh Coast: Squally wind speed reaching 45-55 kmph gusting to 65 kmph** is likely from 16<sup>th</sup> evening and increase becoming **60-70 kmph gusting to 80 kmph** from 17<sup>th</sup> evening till 18<sup>th</sup> morning and decrease thereafter.

**(iii) Sea Condition:**

- **Rough to very rough sea condition** is likely over
  - Southwest Bay of Bengal and along & off Tamil Nadu & Puducherry and Sri Lanka coasts on 16<sup>th</sup> November.
  - Westcentral Bay of Bengal during 16<sup>th</sup>- 17<sup>th</sup> November
  - North Bay of Bengal till midnight of 16<sup>th</sup> November. **It would become very rough to high over North Bay of Bengal from 16<sup>th</sup> midnight to 18<sup>th</sup> morning.**
  - **Along & off north Andhra Pradesh coast** during 16<sup>th</sup> to 17<sup>th</sup> November.
  - **Along & off Odisha coast during 16<sup>th</sup>-17<sup>th</sup> and West Bengal & Bangladesh coasts** during 16<sup>th</sup> to 18<sup>th</sup> November

**(iv) Fishermen Warning:**

Fishermen are advised not to venture into

- Southwest Bay of Bengal on 16<sup>th</sup> November
- Westcentral Bay of Bengal during 16<sup>th</sup> to 17<sup>th</sup> November
- North Bay of Bengal during 16<sup>th</sup> to 18<sup>th</sup> November
- Along & off Andhra Pradesh Coast during 16<sup>th</sup> to 17<sup>th</sup> November
- Along & off Odisha coast during 16<sup>th</sup>-17<sup>th</sup> November
- Along & off West Bengal and Bangladesh coasts during 16<sup>th</sup> to 18<sup>th</sup> November

**(v) Damage Expected & Action Suggested for coastal areas of Odisha & West Bengal:**

- Minor damage to loose/unsecured structures.
- Minor damage to small trees like Banana. Papaya and Drumstick and ripe paddy crops.
- Partial Damage to standing crops in coastal areas of Odisha & west Bengal.
- Minor damage to Kutcha embankments.

**The system is under continuous surveillance and the next Press Release will be issued at 1430 hours IST of 17<sup>th</sup> November, 2023.**

**For regular updates kindly visit [www.rsmcnewdelhi.imd.gov.in](http://www.rsmcnewdelhi.imd.gov.in) and [www.mausam.imd.gov.in](http://www.mausam.imd.gov.in)**

---

Contact: Cyclone Warning Division, Office of the Director General of Meteorology,  
India Meteorological Department, Ministry of Earth Sciences.

Phone:(91) 11-24652484, FAX: (91) 11-24643128, 24623220, E-mail:cwdhq2008@gmail.com, Website: [rsmcnewdelhi.imd.gov.in](http://rsmcnewdelhi.imd.gov.in)

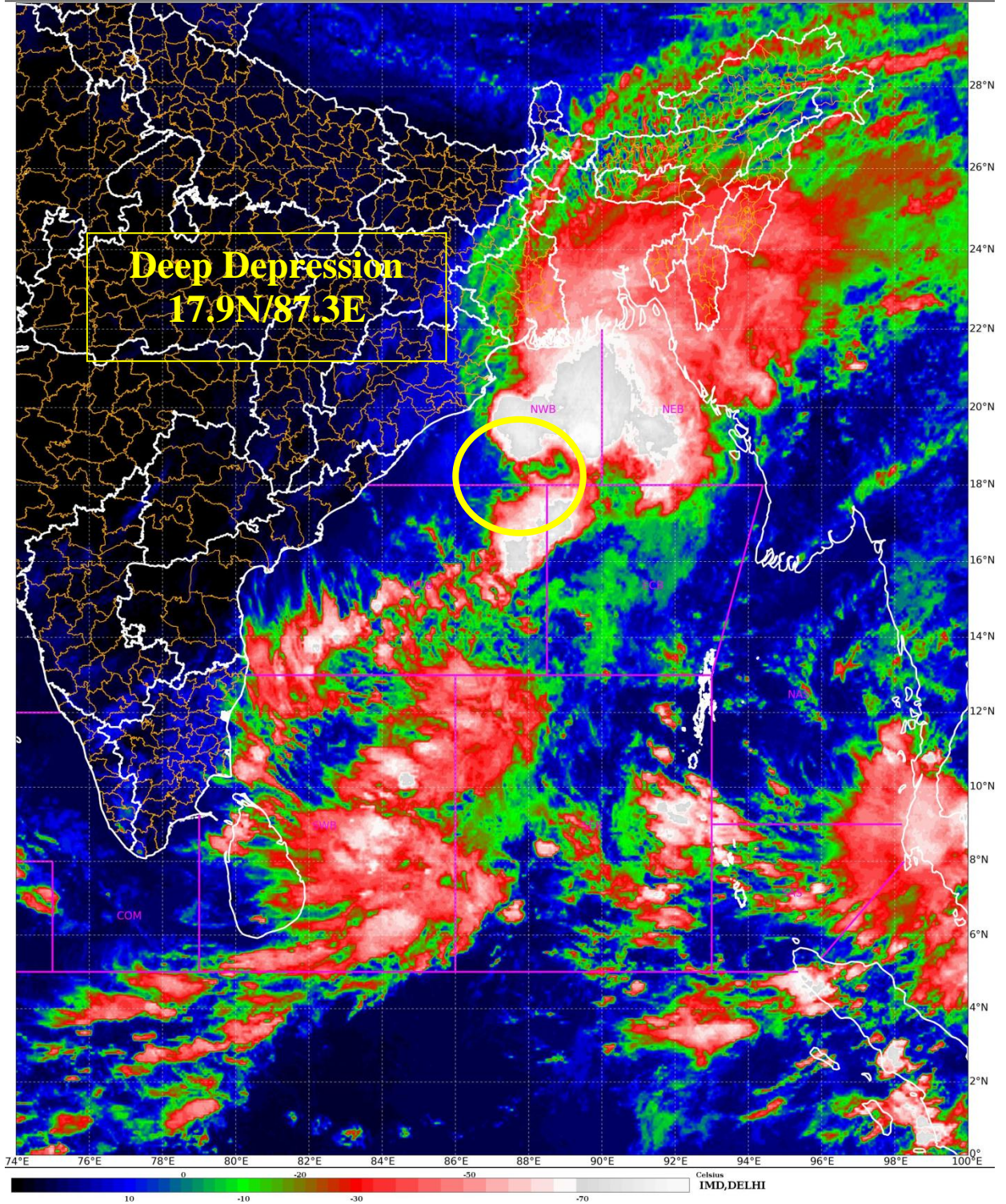
Spatial rainfall distribution: Isolated: <25%, A few: 26-50%, Many: 51-75%, Most: 76-100%

Rainfall amount (mm): Heavy rain: 64.5 – 115.5, Very heavy rain: 115.6 – 204.4, Extremely heavy rain: 204.5 or more.



SAT : INSAT-3D IMG  
IMG\_TIR1\_TEMP 10.8 um  
LIC Mercator

16-11-2023/(0830 to 0857) GMT  
16-11-2023/(1400 to 1427) IST



Contact: Cyclone Warning Division, Office of the Director General of Meteorology,  
India Meteorological Department, Ministry of Earth Sciences.

Phone:(91) 11-24652484, FAX: (91) 11-24643128, 24623220, E-mail:cwdhq2008@gmail.com, Website: [rsmcnewdelhi.imd.gov.in](http://rsmcnewdelhi.imd.gov.in)

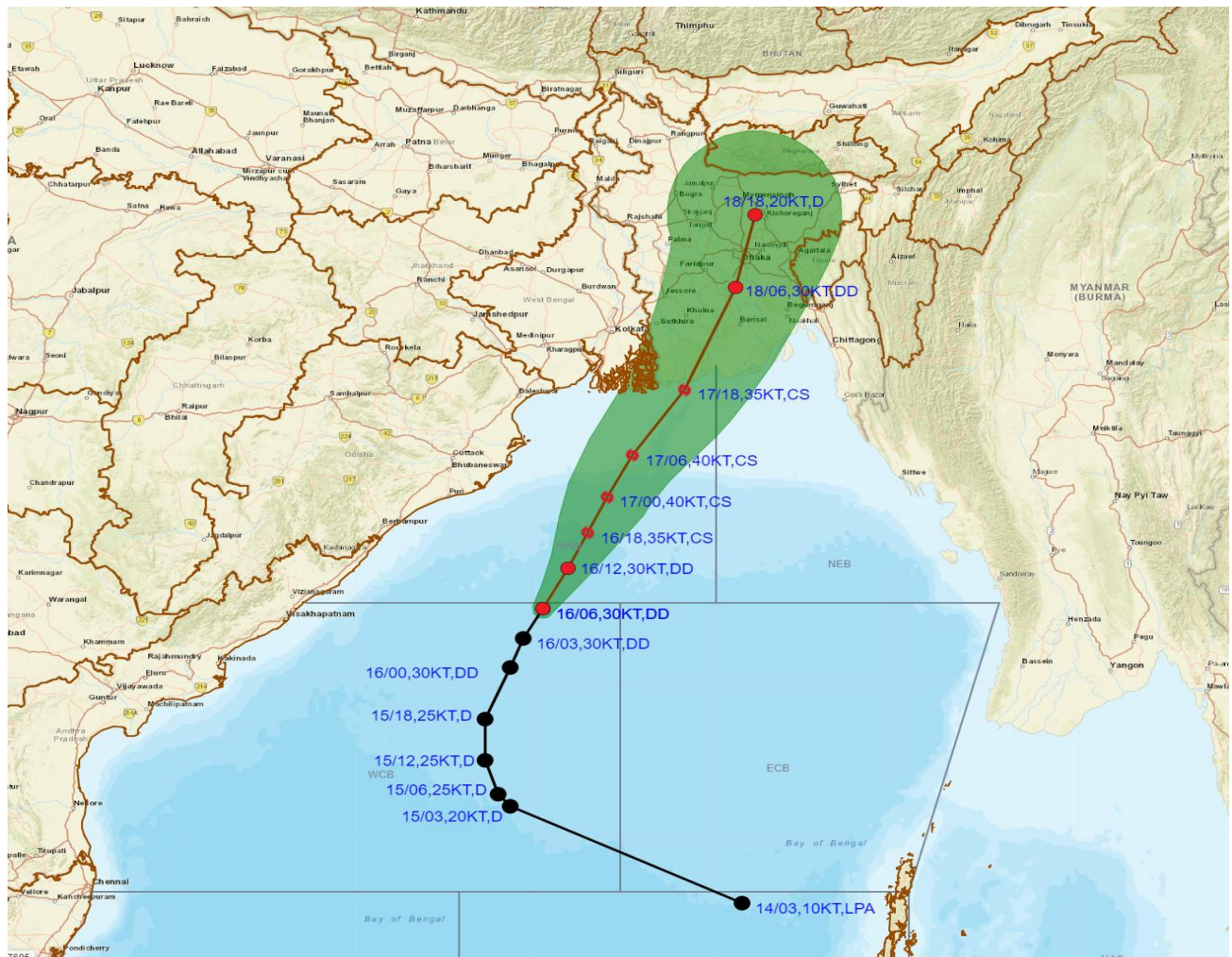
Spatial rainfall distribution: Isolated: <25%, A few: 26-50%, Many: 51-75%, Most: 76-100%

Rainfall amount (mm): Heavy rain: 64.5 – 115.5, Very heavy rain: 115.6 – 204.4, Extremely heavy rain: 204.5 or more.





**OBSERVED AND FORECAST TRACK AND INTENSITY ALONGWITH CONE OF UNCERTAINTY IN ASSOCIATION WITH DEEP DEPRESSION OVER WESTCENTRAL BAY OF BENGAL BASED ON 0600 UTC (1130 IST) OF 16<sup>TH</sup> NOVEMBER 2023.**



DATE/TIME IN UTC  
 IST=UTC + 0530  
 L: LOW PRESSURE AREA  
 WML: WELL MARKED LOW PRESSURE AREA  
 D: DEPRESSION (17-27 KT)  
 DD: DEEP DEPRESSION (28-33 KT)  
 CS: CYCLONIC STORM (34-47 KT)  
 SCS: SEVERE CYCLONIC STORM (48-63KT)  
 VSCS: VERY SEVERE CYCLONIC STORM (64-89 KT)  
 ESCS: EXTREMELY SEVERE CYCLONIC STORM (90-119 KT)  
 SuCS: SUPER CYCLONIC STORM ( $\geq 120$  KT)

- LESS THAN 34 KT
- 34-47 KT
- $\geq 48$  KT
- OBSERVED TRACK
- FORECAST TRACK
- CONE OF UNCERTAINTY

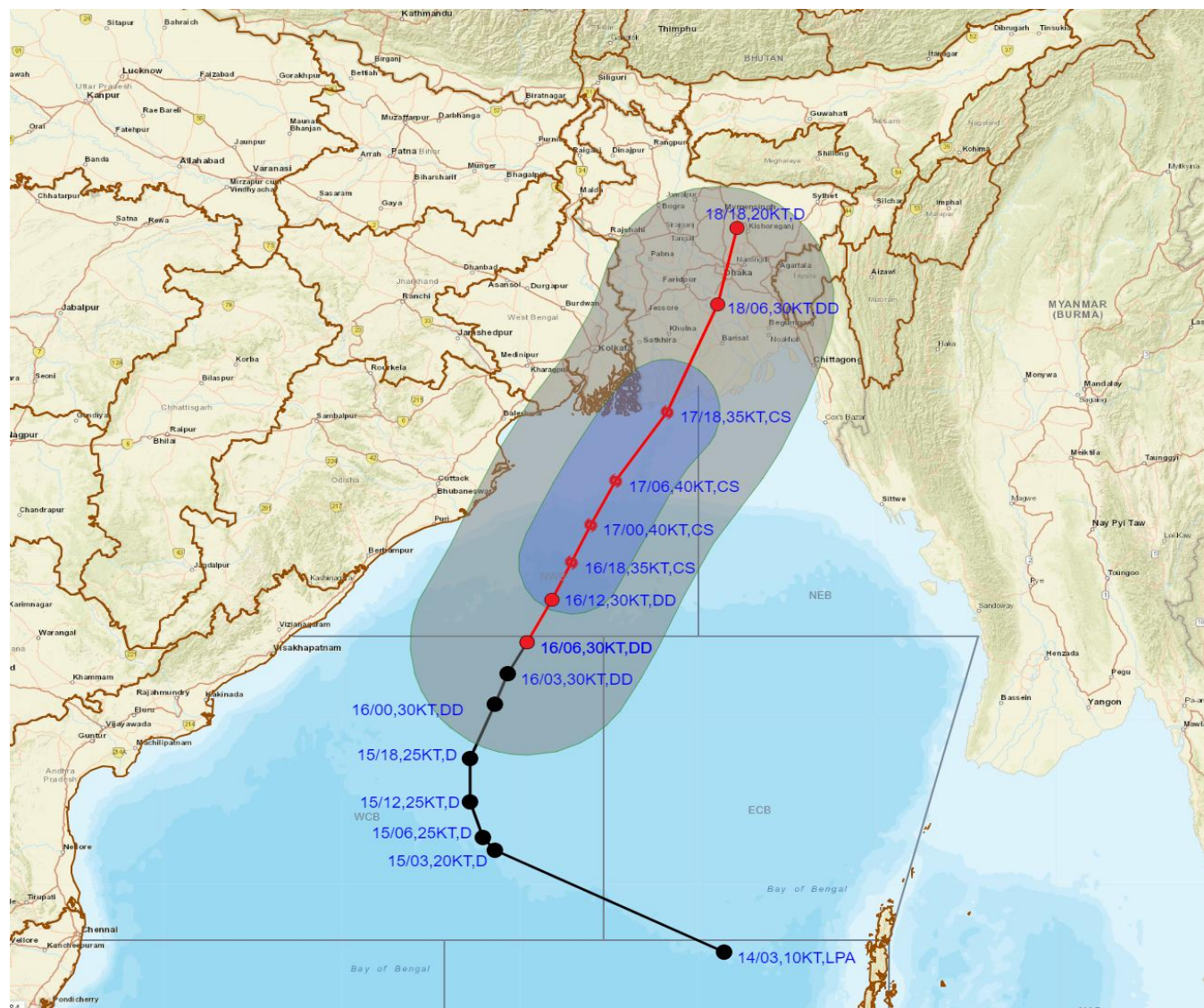
Forecast	DISTANCE(KM) AND DIRECTION FROM STATIONS			
	PARADIP (CWR)	DIGHA	KHEPUPARA	CHITTAGONG (AMBAGAN)
16.11.23/0600	270, SSE	410, S	540, SSW	680 SW
17.11.23/0600	220, E	180, SE	220, SW	380, WSW
17.11.23/1800	330, ENE	210, E	90, WSW	250, WSW
18.11.23/0600	500, NE	340, ENE	150, N	190, NW

Contact: Cyclone Warning Division, Office of the Director General of Meteorology,  
 India Meteorological Department, Ministry of Earth Sciences.  
 Phone:(91) 11-24652484, FAX: (91) 11-24643128, 24623220, E-mail: [cwdhq2008@gmail.com](mailto:cwdhq2008@gmail.com), Website: [smcnewdelhi.imd.gov.in](http://smcnewdelhi.imd.gov.in)  
 Spatial rainfall distribution: Isolated: <25%, A few: 26-50%, Many: 51-75%, Most: 76-100%  
 Rainfall amount (mm): Heavy rain: 64.5 – 115.5, Very heavy rain: 115.6 – 204.4, Extremely heavy rain: 204.5 or more.





**OBSERVED AND FORECAST TRACK AND INTENSITY ALONG WITH QUADRANT WIND DISTRIBUTION IN ASSOCIATION WITH DEEP DEPRESSION OVER WESTCENTRAL BAY OF BENGAL BASED ON 0600 UTC (1130 IST) OF 16<sup>TH</sup> NOVEMBER 2023.**



DATE/TIME IN UTC  
 IST=UTC + 0530  
 L: LOW PRESSURE AREA  
 WML: WELL MARKED LOW PRESSURE AREA  
 D: DEPRESSION (17-27 KT)  
 DD: DEEP DEPRESSION (28-33 KT)  
 CS: CYCLONIC STORM (34-47 KT)  
 SCS: SEVERE CYCLONIC STORM (48-63KT)  
 VSCS: VERY SEVERE CYCLONIC STORM (64-89 KT)  
 ESCS: EXTREMELY SEVERE CYCLONIC STORM (90-119 KT)  
 SuCS: SUPER CYCLONIC STORM (≥ 120 KT)

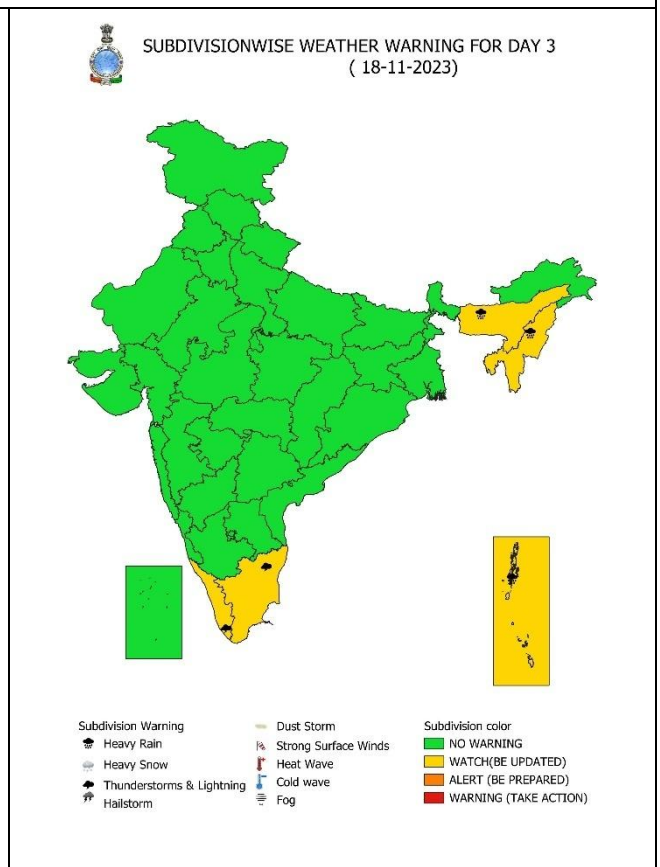
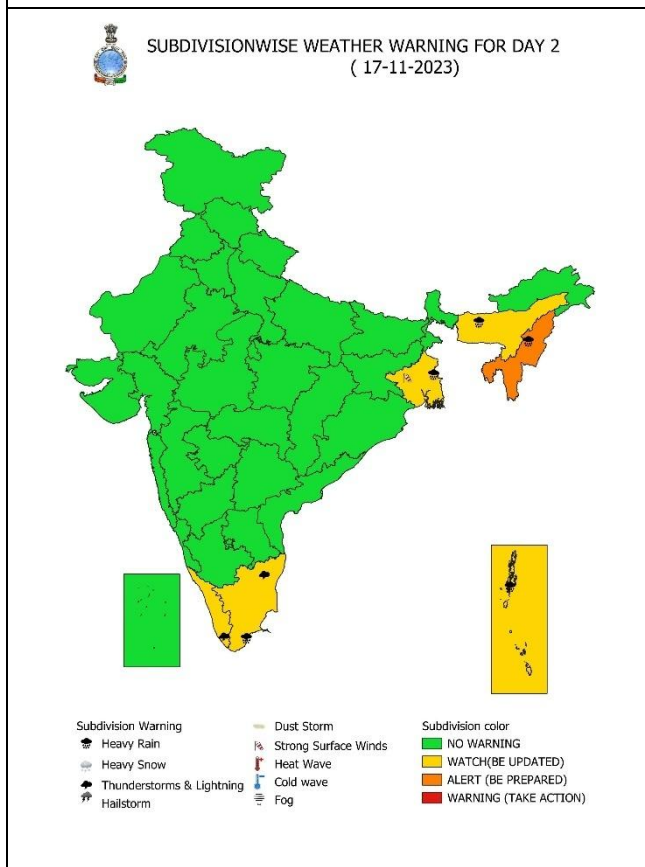
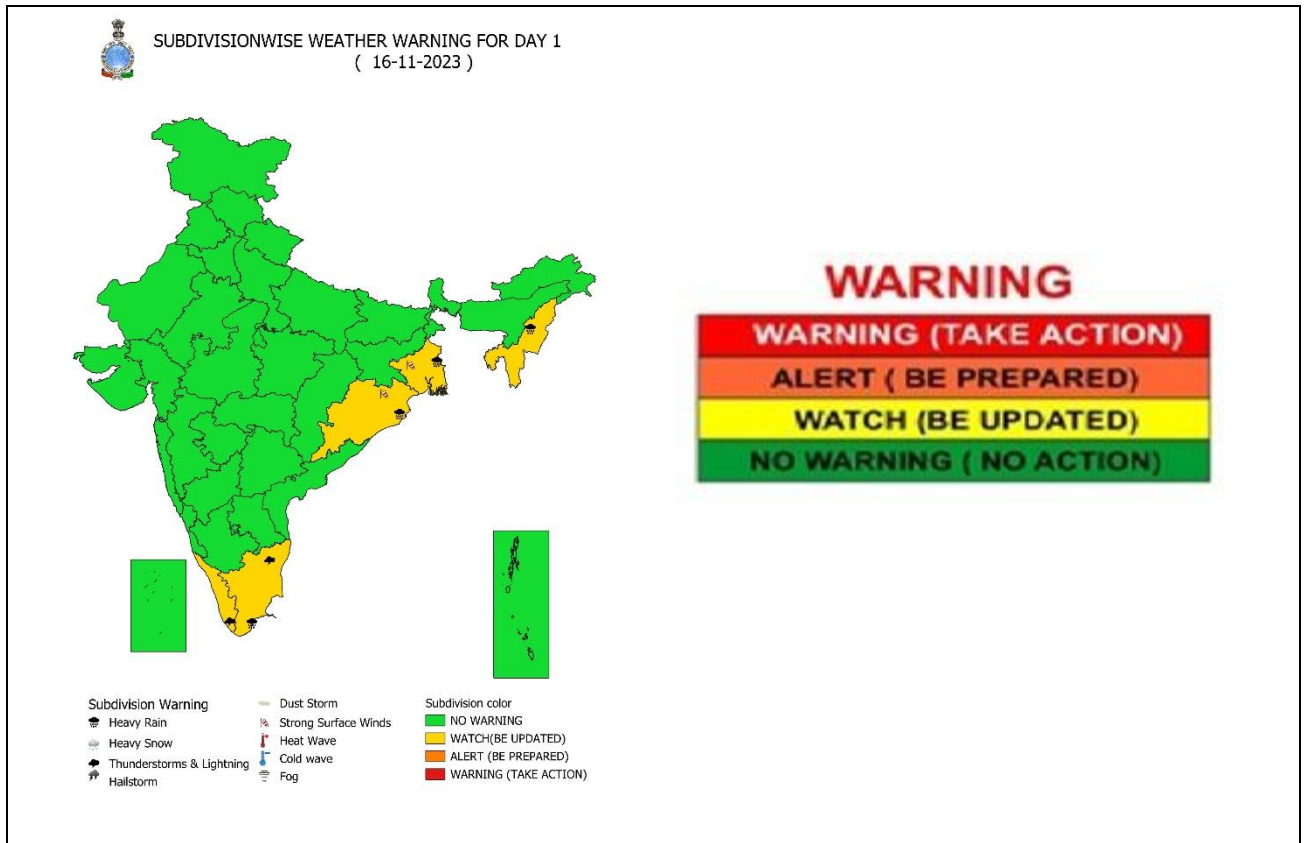
● LESS THAN 34 KT  
 ○ 34-47 KT  
 ● ≥ 48 KT  
 — OBSERVED TRACK  
 — FORECAST TRACK  
 ▲ CONE OF UNCERTAINTY  
 AREA OF MAXIMUM SUSTAINED WIND SPEED:  
 ■ 28-33 KT (52-61 KMPH)  
 ■ 34-49 KT (62-91 KMPH)  
 ■ 50-63 KT (92-117 KMPH)  
 ■ ≥ 64 KT (≥ 118 KMPH)

**IMPACT OVER THE SEA**

MSW (knot/kmph)	Impact	Action
28-33 (52-61)	Very rough seas	Total suspension of fishing operations
34-49 (62-91)	High to very high seas	Total suspension of fishing operations
50-63 (92-117)	Very high seas	Total suspension of fishing operations
≥ 64 (≥ 118)	Phenomenal	Total suspension of fishing operations

Contact: Cyclone Warning Division, Office of the Director General of Meteorology,  
 India Meteorological Department, Ministry of Earth Sciences.  
 Phone:(91) 11-24652484, FAX: (91) 11-24643128, 24623220, E-mail:cwdhq2008@gmail.com, Website: [smcnewdelhi.imd.gov.in](http://smcnewdelhi.imd.gov.in)  
 Spatial rainfall distribution: Isolated: <25%, A few: 26-50%, Many: 51-75%, Most: 76-100%  
 Rainfall amount (mm): Heavy rain: 64.5 – 115.5, Very heavy rain: 115.6 – 204.4, Extremely heavy rain: 204.5 or more.

## WEATHER WARNING GRAPHICS

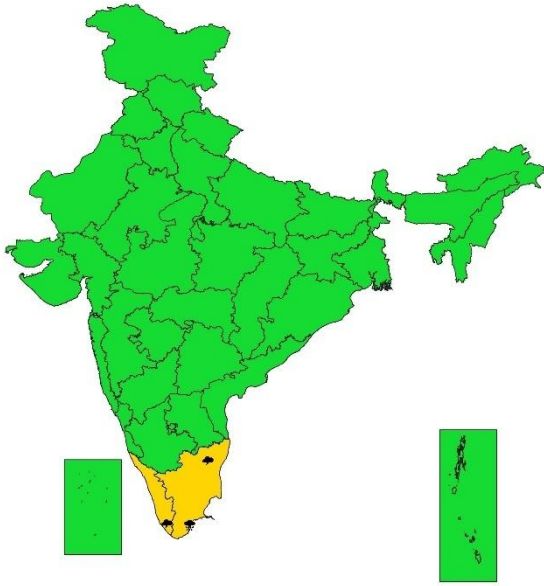


**Contact: Cyclone Warning Division, Office of the Director General of Meteorology, India Meteorological Department, Ministry of Earth Sciences.**  
**Phone:(91) 11-24652484, FAX: (91) 11-24643128, 24623220, E-mail:cwdhq2008@gmail.com, Website: [rsmcnewdelhi.ind.gov.in](http://rsmcnewdelhi.ind.gov.in)**  
**Spatial rainfall distribution: Isolated: <25%, A few: 26-50%, Many: 51-75%, Most: 76-100%**  
**Rainfall amount (mm): Heavy rain: 64.5 – 115.5, Very heavy rain: 115.6 – 204.4, Extremely heavy rain: 204.5 or more.**





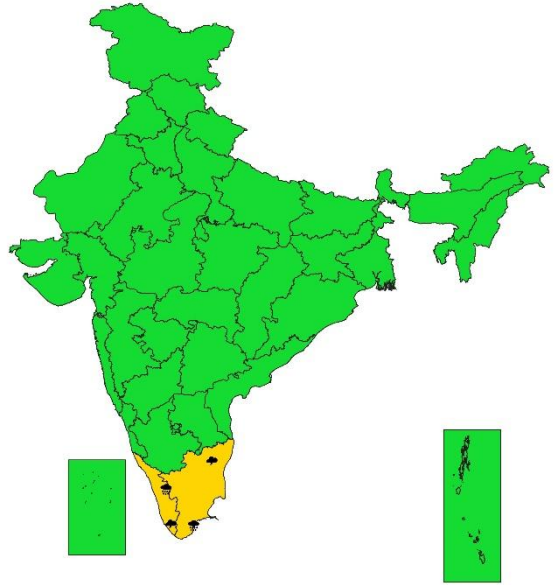
**SUBDIVISIONWISE WEATHER WARNING FOR DAY 4**  
( 19-11-2023)



- |                             |                        |                          |
|-----------------------------|------------------------|--------------------------|
| <b>Subdivision Warning</b>  | <b>Dust Storm</b>      | <b>Subdivision color</b> |
| ☁ Heavy Rain                | 🌪 Strong Surface Winds | 🟢 NO WARNING             |
| ❄ Heavy Snow                | 🔥 Heat Wave            | 🟡 WATCH (BE UPDATED)     |
| ⚡ Thunderstorms & Lightning | 📉 Cold wave            | 🟠 ALERT (BE PREPARED)    |
| 🌨 Hailstorm                 | 🌫 Fog                  | 🔴 WARNING (TAKE ACTION)  |



**SUBDIVISIONWISE WEATHER WARNING FOR DAY 5**  
( 20-11-2023)



- |                             |                        |                          |
|-----------------------------|------------------------|--------------------------|
| <b>Subdivision Warning</b>  | <b>Dust Storm</b>      | <b>Subdivision color</b> |
| ☁ Heavy Rain                | 🌪 Strong Surface Winds | 🟢 NO WARNING             |
| ❄ Heavy Snow                | 🔥 Heat Wave            | 🟡 WATCH (BE UPDATED)     |
| ⚡ Thunderstorms & Lightning | 📉 Cold wave            | 🟠 ALERT (BE PREPARED)    |
| 🌨 Hailstorm                 | 🌫 Fog                  | 🔴 WARNING (TAKE ACTION)  |



**Heavy Rain**



**Strong Winds**



**Frost**



**Heavy Snow**



**Visibility**



**Cold Wave**



**Thunderstorm**



**Cyclone**



**Heat Wave**



**Dust Storm**



**Squall/ Hail**



**Sea State**

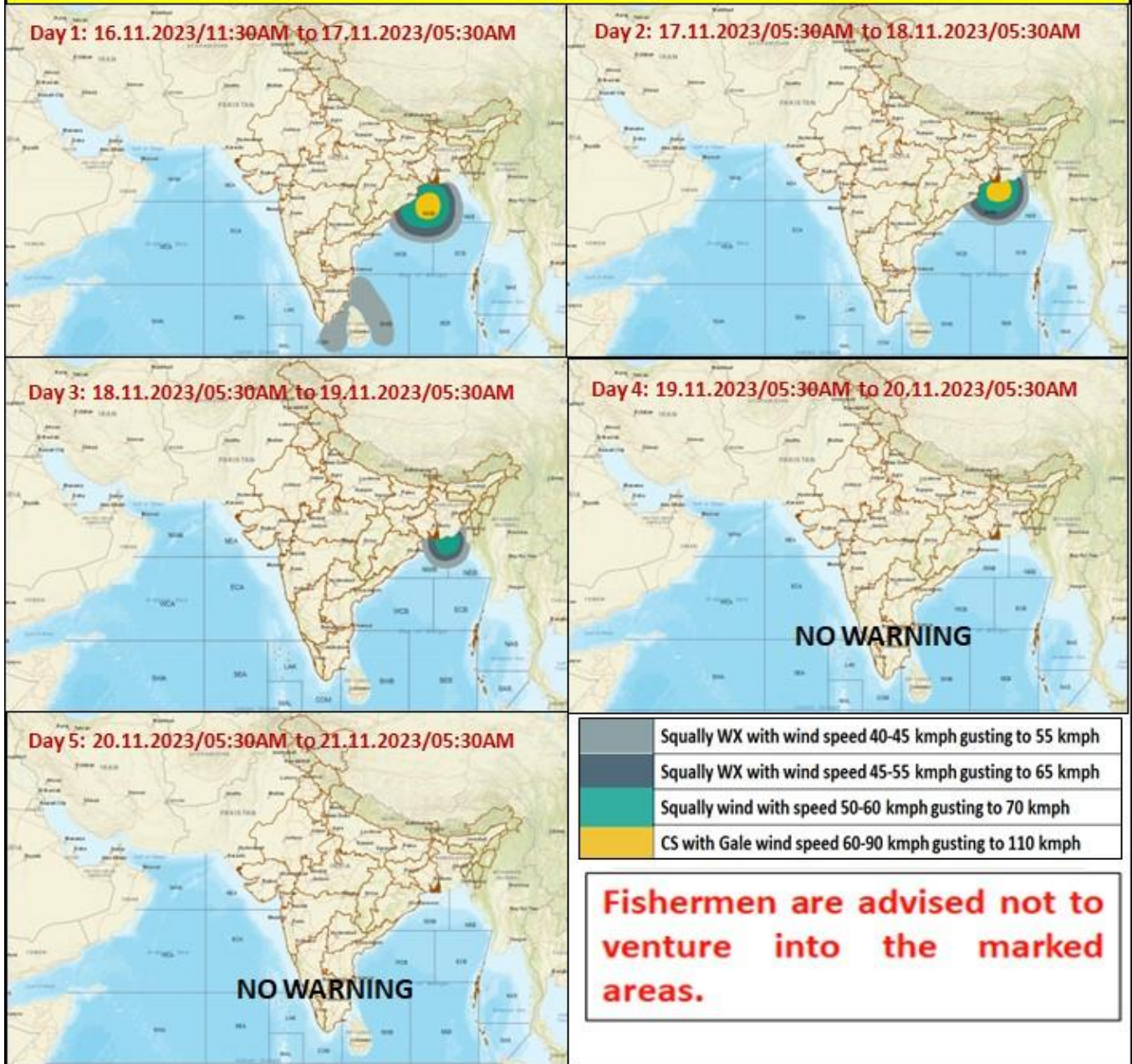
**Contact: Cyclone Warning Division, Office of the Director General of Meteorology,  
India Meteorological Department, Ministry of Earth Sciences.**

**Phone:(91) 11-24652484, FAX: (91) 11-24643128, 24623220, E-mail:cwdhq2008@gmail.com, Website: [rsmcnewdelhi.ind.gov.in](http://rsmcnewdelhi.ind.gov.in)**

**Spatial rainfall distribution: Isolated: <25%, A few: 26-50%, Many: 51-75%, Most: 76-100%**

**Rainfall amount (mm): Heavy rain: 64.5 – 115.5, Very heavy rain: 115.6 – 204.4, Extremely heavy rain: 204.5 or more.**

## Fishermen warning graphics



Contact: Cyclone Warning Division, Office of the Director General of Meteorology,  
India Meteorological Department, Ministry of Earth Sciences.

Phone:(91) 11-24652484, FAX: (91) 11-24643128, 24623220, E-mail:cwdhq2008@gmail.com, Website: [rsmcnewdelhi.ind.gov.in](http://rsmcnewdelhi.ind.gov.in)

Spatial rainfall distribution: Isolated: <25%, A few: 26-50%, Many: 51-75%, Most: 76-100%

Rainfall amount (mm): Heavy rain: 64.5 – 115.5, Very heavy rain: 115.6 – 204.4, Extremely heavy rain: 204.5 or more.